

Air Powered Tacker



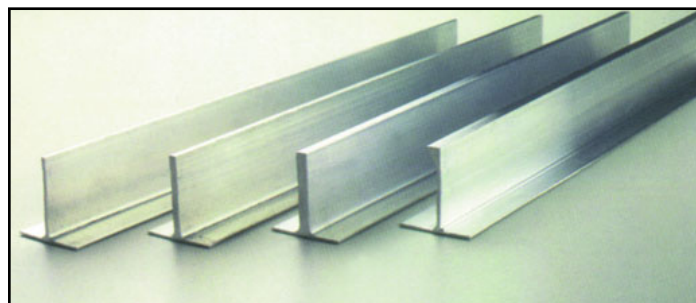
National Steel Rule

This Air Powered Tacker is used to quickly mount Aluminum Stripper as well as Aluminum Surface Score and Cushion Crease to the dieboard. Engineered to provide years of reliable service. Specially-designed Hardened Staples are available in sizes from 1/2" to 1-1/4" and can be ordered from your **Wagner Supply Group** location.

Hardened Staples for Air Tacker

Sizes Available	Quantity per Box
1/2", 5/8", 3/4", 7/8", 1", 1-1/8"	5,000 Staples
1-1/4"	4,000 Staples

Aluminum Stripper



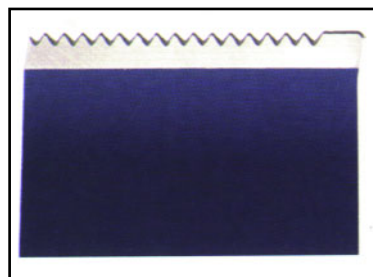
Aluminum Stripper offers a quick and economical method of building male stripping boards. This product can be used in conjunction with or in place of typical methods such as wood. This surface mounted product is available in four widths and is particularly useful where the integrity of the male board might be compromised by cutting too many kerfs. Aluminum Stripper is easily installed using the Air Tacker and Hardened Staples mentioned above. Available sizes: 1/16", 1/8", 3/16" and 1/4" in 1.375" high for use with 5/8" thick die board.

Aluminum Score

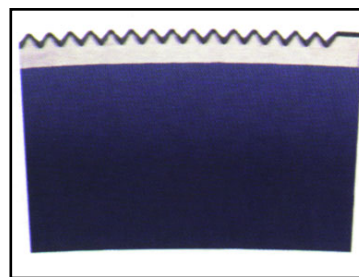


Aluminum Surface Score offers ease of application along with the ability to achieve score profiles unavailable in steel. Aluminum Surface Score is easily mounted using the Air Tacker and Hardened Staples mentioned at the top of this page.

Available in .220" (5.59mm) or .260" (6.60mm) in 3 pt. shallow profile.



Straight Miter Tight sizes:
.937", .970", .990" and 1" to match-up to vertical knives.



Curved Miter Tight sizes:
.960", .990", 1" and 1.025" to match-up to horizontal knives. Curved blades have no back notch to assure that the stop rule will butt up to a solid piece of steel.

Miter Tight (Pre-Cut Miter Rule)

Scrap buildup is a common cause of lead edge knife failure. Miter Tight blades are designed to prevent scrap build-up by precisely matching the contour of the bevel rules commonly used in lead edges. Miter Tight blades are pre-cut in standard 1-1/2" lengths that save time in ruling and simplify programming.



2041 Elm Court • Ontario, CA 91761
Toll-Free:
(800) 423-4478 • Fax: (866) 786-2437



2532 Converse Street • Dallas, TX 75207
Toll-Free:
(800) 262-4695 • Fax: (800) 446-6651



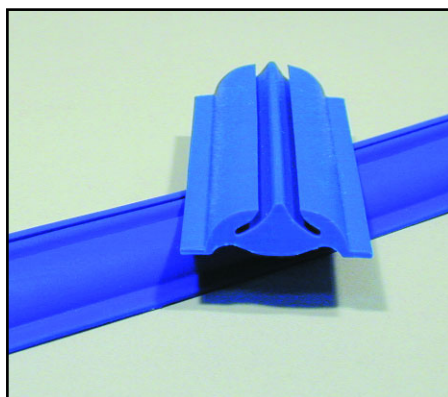
960 Industrial Drive • Elmhurst, IL 60126
Toll-Free:
(800) 334-7914 • Fax: (800) 554-9124

Rule Guard



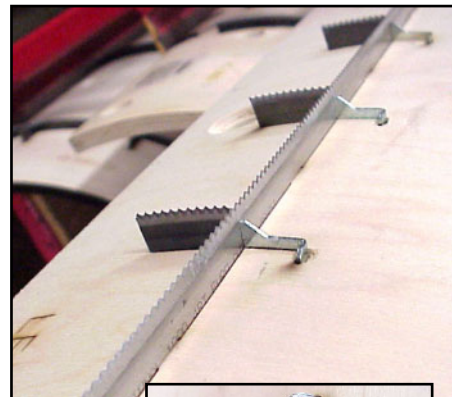
When storing rotary dies, the Rule Guard protects steel rule located near the edges of the die. Easily mounts to the edges of two pieces of rotary boards, maintains consistent alignment for accurate cutting.

Shoulder Flex



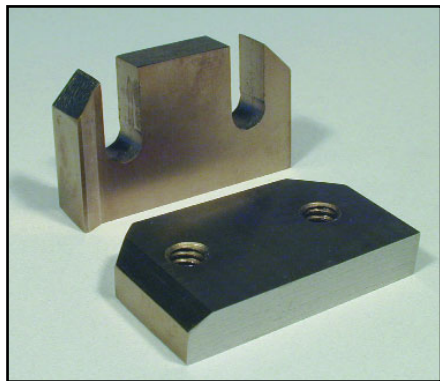
Surface mounted, easy to install helps prevent corrugated board from cracking during scoring.

LeGards



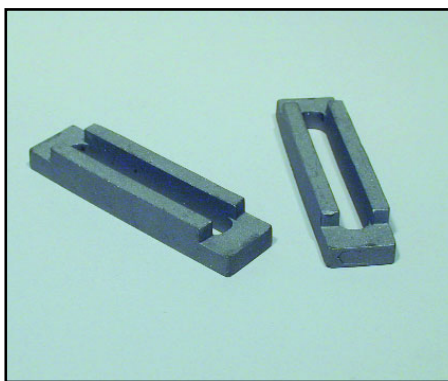
The LeGard (lead edge guard) braces the lead knife against impact and maintains a tight fit between the trim knife and the lead knife. Sold in lots of 100.

Rotary Miter Knives



Mitering is made simple for Rotary Rule, designed to easily replace the cutting blades on your existing Helmod Rule Cutter.

4-Way Adjustable Hardware



3" overall length with a 2" long adjusting slot that is 1/4" - 5/16" wide. Also available in a 4" overall length with a 3" adjusting slot.

Stretch Measuring Tape



Stretch Measuring Tape is used for laying out of rotary die boards. Compensates for differences between flat and rotary measures. Available for 1/2" and 5/8" wood for a 66" cylinder, .970 high rule.



2041 Elm Court • Ontario, CA 91761
Toll-Free:
(800) 423-4478 • Fax: (866) 786-2437



2532 Converse Street • Dallas, TX 75207
Toll-Free:
(800) 262-4695 • Fax: (800) 446-6651



960 Industrial Drive • Elmhurst, IL 60126
Toll-Free:
(800) 334-7914 • Fax: (800) 554-9124