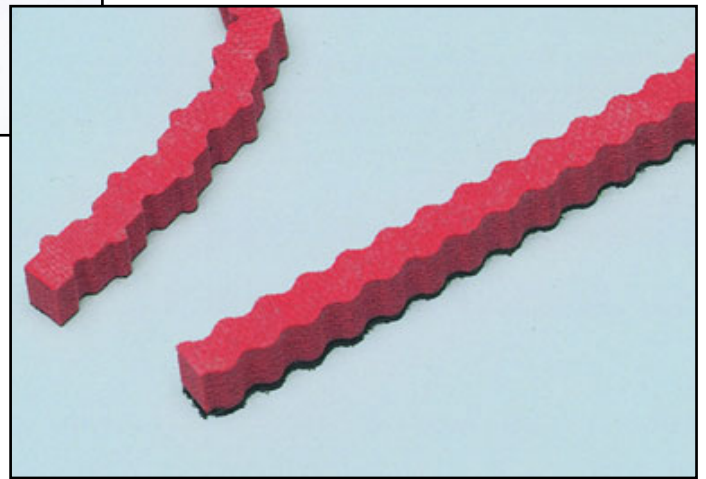




## Monroe Rubber & Plastic, Inc.

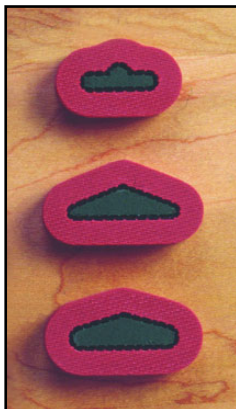


Monroe offers a wide variety of ejection materials including open cell, closed cell and specialty materials like **Green G'rilla™**, Neoprene and Stripping Foam. Monroe also features specially-cut shapes like punch rubber (to fit Wagner Punches), **Ejecto-Flex™**, **E-Z-Set™**, and **Side-Wave Ejectors**. Monroe's **Groovy G'rilla™** is a wavy slot rubber designed to provide excellent columnar strength for ejection, while allowing space for compression.

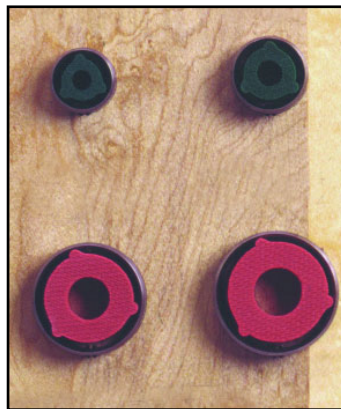


Monroe's Ejectoflex™ and Side-Wave ejectors are designed for quick and easy rubbering of dies. Both Side-Wave and Ejectoflex™ automatically space themselves from the cutting rule. Ejectoflex™, with its unique shape also allows it to easily and precisely conform to curved or bent rule. Ejectoflex™ and Side-Wave are available with pressure sensitive adhesive.

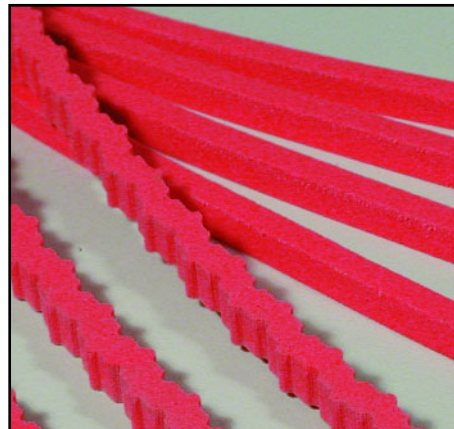
Monroe's E-Z Set™ strips are available in open cell, closed cell and Green G'rilla™ styles. E-Z-Set™ automatically spaces the material accurately from the steel rule for quick die rubbering. E-Z-Set™ ejectors compress without putting pressure against the cutting rule. It helps reduce static charge buildup and nick breakage.



Punch rubber for Wagner seamless hangers.



Punch rubber for Wagner seamless punches.



## Red Rhino

Red Rhino has a  $\pm 0.020$  thickness tolerance. It has the quick kick needed for ejecting thin substrates while having the compressibility to handle thicker substrates as well. Red Rhino eliminates crushing materials and overloading the press.

### West

2041 Elm Court • Ontario, CA 91761  
**Toll-Free:**  
 (800) 423-4478 • Fax: (866) 786-2437

### Southwest

2532 Converse Street • Dallas, TX 75207  
**Toll-Free:**  
 (800) 262-4695 • Fax: (800) 446-6651

### Midwest

960 Industrial Drive • Elmhurst, IL 60126  
**Toll-Free:**  
 (800) 334-7914 • Fax: (800) 554-9124

## Open Cell Material

Used on flat dies only. Has less compressions set than closed cell. Can be compressed more without cell fracture and loss of integrity.

Available in Sheets, Pads, Strips, Kiss Cut, Loose Pieces and E-Z Set™ Strips.



**15700 Soft**  
 Heights Available:  
 1/4", 3/8", 1/2",  
 3/4", 1"



**01100 Soft**  
 Heights Available:  
 1/4", 5/16", 3/8",  
 7/16", 1/2", 9/16",  
 5/8", 3/4", 1"



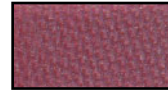
**01700 Soft**  
 Heights Available:  
 1/4", 5/16", 3/8",



**02700 Medium**  
 Heights Available:  
 1/8", 3/16", 1/4",  
 5/16", 3/8", 7/16",  
 1/2", 9/16", 5/8",  
 3/4", 1"



**06500 Firm**  
 Heights Available:  
 3/16", 1/4", 5/16",  
 3/8", 7/16", 1/2",  
 9/16", 5/8"



**03500 X-Firm**  
 Heights Available:  
 1/8", 3/16", 1/4",  
 5/16", 3/8", 7/16",  
 1/2", 9/16", 5/8"

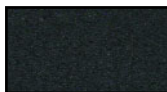


**14300 Firm**  
 Heights Available:  
 3/8", 7/16",  
 1/2", 9/16"

## Closed Cell Material

Can be used on either flat or rotary dies. Has a better recovery rate, but more sensitive to compression than open cell. Should not be over-compressed.

Available in Sheets, Pads, Strips, Kiss Cut, Loose Pieces and E-Z Set™ Strips.



**04100 Medium**  
 Heights Available:  
 1/4", 5/16", 3/8",  
 7/16", 1/2", 9/16",  
 5/8", 3/4", 7/8", 1"



**04300 Medium**  
 Heights Available:  
 1/4", 5/16", 3/8",  
 7/16", 1/2", 9/16",  
 5/8", 3/4", 7/8", 1"



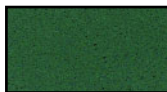
**12300 Medium**  
 Heights Available:  
 1/4", 5/16", 3/8",  
 7/16", 1/2", 5/8",  
 3/4", 7/8", 1"

## Specialty Materials

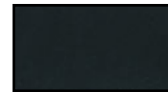
Specialized materials for stripping, slots and quick ejection applications.

Available in Sheets, Pads, Strips, Kiss Cut, Loose Pieces. E-Z Set™ Strips only available in Green G'rilla™ and Sponged Cork.

Groovy G'rilla™ only available in pads cut in lengths of 6".



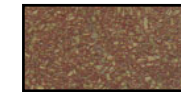
**Green G'rilla™**  
 Heights Available:  
 1/16", 1/8", 3/16"  
 1/4", 5/16", 3/8",  
 7/16", 1/2", 9/16",  
 5/8", 3/4"



**Neoprene**  
 Heights Available:  
 1/16", 1/8", 3/16",  
 1/4", 3/8"



**07100**  
 Stripping Foam



**13500 Sponged Cork**  
 Heights Available:  
 3/16", 1/4", 5/16",  
 3/8", 1/2"



**Groovy G'rilla™**  
 (wavy slot rubber)  
 Thicknesses Available:  
 1/4", 5/16", 3/8"  
 in widths of  
 1/8", 3/16", 1/4",  
 5/16" and 3/8"



**Gum**  
 Heights Available:  
 1/16", 1/8", 3/16",  
 1/4", 3/8", 1/2"



**Monroe Rubber & Plastic, Inc.**



## Selection Guide - Die ejection materials for flat dies.

Material being die-cut	Rigid		Semi-Rigid		Flexible	
	Thick	Thin	Thick	Thin	Thick	Thin
<b>Compression of Ejection Material</b>	Firm	Extra-Firm	Medium	Firm	Soft	Medium
<b>Ejection Material Placement</b>						
<b>Die Top →</b>	AFR	AFR	AFR	NTR	NTR	NTR
<b>Die Bottom →</b>	AFR	AFR	AFR	NTR	NTR	NTR
<b>Type of Cut</b>						
<b>Top →</b>	Pieces	Pieces	Pieces	Strips	Strips	Strips
<b>Bottom →</b>	Pieces	Pieces/Strips	Pieces/Strips	Entire Die	Entire Die	Entire Die

AFR = Away From Rule

NTR = Next To Rule



2041 Elm Court • Ontario, CA 91761  
**Toll-Free:**  
 (800) 423-4478 • Fax: (866) 786-2437



2532 Converse Street • Dallas, TX 75207  
**Toll-Free:**  
 (800) 262-4695 • Fax: (800) 446-6651



960 Industrial Drive • Elmhurst, IL 60126  
**Toll-Free:**  
 (800) 334-7914 • Fax: (800) 554-9124